

**MULTIVOLTAGE - MULTIRANGE  
TWIN ANALOGUE TIMERS**



**Usò/Use**

Contenitore modulare per risparmiare spazio in installazione.

Main use where you need to install saving space.



**DATI TECNICI/DATA**

Tensione alimentazione / <b>Operating voltage:</b>	AC / DC 24-240V
Tensione di esercizio ammissibile <b>Allowable operating range:</b>	85-110% della tensione dichiarata 85-110% of rated operating voltage
Frequenza / <b>Rated frequency:</b>	50/60Hz
Portata Contatto / <b>Contact rating:</b>	250VAC 5A (carico resistivo / resistive load)
Tempo di ripristino / <b>Reset time:</b>	Max 0,1sec
Consumo energetico / <b>Power consumption:</b>	Circa 3VA/Approx 3VA
Temperatura di esercizio / <b>Operating temperature</b>	-10/+50°C
Umidità dell'ambiente / <b>Ambient humidity:</b>	Max 85%RH
Altitudine / <b>Altitude:</b>	Max 2000m
Vita elettrica / <b>Electrical life :</b>	> 100000 cicli/>100000 cycles
Vita meccanica/ <b>Mechanical life:</b>	>5000000 cicli />50000000 cycles
Peso/ <b>Weight:</b>	93g

**Certificazioni/Approvals**  
CE

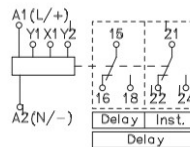
note:

**Caratteristiche/Features:**

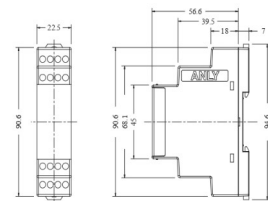
<b>Intervalli di tempo selezionabili/Time range</b>	1s/10s/100s/10m/100m/10h/100h
<b>Modalità di funzionamento /Operation mode</b>	B6

**Schemi di collegamento/Connection:**

Contatto/Contact	Chiuso/Short	Aperto/Open
Y1-A1	OFF Start	ON Start
Y2-A1	Ritardato/Delayed	Istantaneo+Ritardato Instantaneous+Delayed
X1-A1	Porta/Gate	---



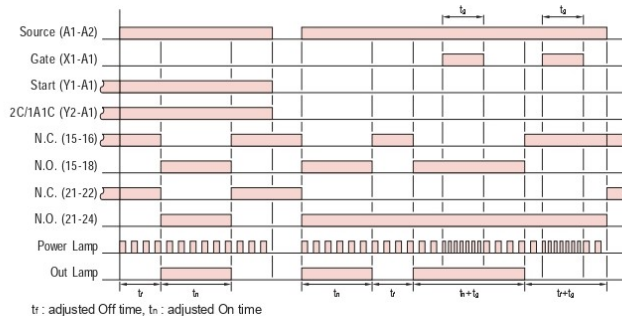
**Misure/Sizes (mm):**



Tolerance:±0.1

**Schemi di funzionamento/Timing chart:**

**Mode B6 : Circulation**



tr : adjusted Off time, tn : adjusted On time